

# HEART OF JESUS

---

CAPITAL CAMPAIGN

---

MOTHER CABRINI SHRINE





Dear Friends,

For over 70 years, Mother Cabrini Shrine has been a blessing and a sanctuary to her countless visitors. People have come to worship and pray during difficult times of hardship, struggle and uncertainty, as well as in joyous times of weddings, baptisms, and anniversaries. Individuals and groups have come to renew and enhance their faith, pray for their loved ones, and to find solitude in the beauty and serenity of the Shrine. It's for this reason we need to take time and give added care to these precious buildings and our grounds.

For the last two years, the Shrine leadership has been meeting to determine the needs of our facilities. Your input and feedback have been appreciated and heard as we determine the best use of our buildings and property to meet your needs. After a successful feasibility study was conducted, we know the time is NOW to begin the important work of raising \$4.5 million to restore and enhance Mother Cabrini Shrine.

We invite you to become involved in our Heart of Jesus Capital Campaign. Please look over this information carefully and pray how you might be generous to the Shrine by supporting our renovations and enhancements. The chapel, the facilities and the land, which are all vital to our ministry, are here because of Mother Cabrini, the Missionary Sisters, and generations of donors and volunteers. Now is the time to restore, repair, and enhance our facilities to provide for future growth and vitality.

We know and believe Mother Cabrini hears our prayers and intercedes for the hundreds of thousands of annual visitors who come to visit the Shrine. We hope and pray that you will choose to take part in this Heart of Jesus Campaign for today and for the future of Mother Cabrini Shrine.

United in the Heart of Jesus,

Sr. Roselle Santivasi, M.S.C.  
Missionary Sisters of the Sacred Heart

Jeff Lewis  
Executive Director

JoAnn Seaman  
Development Director

---

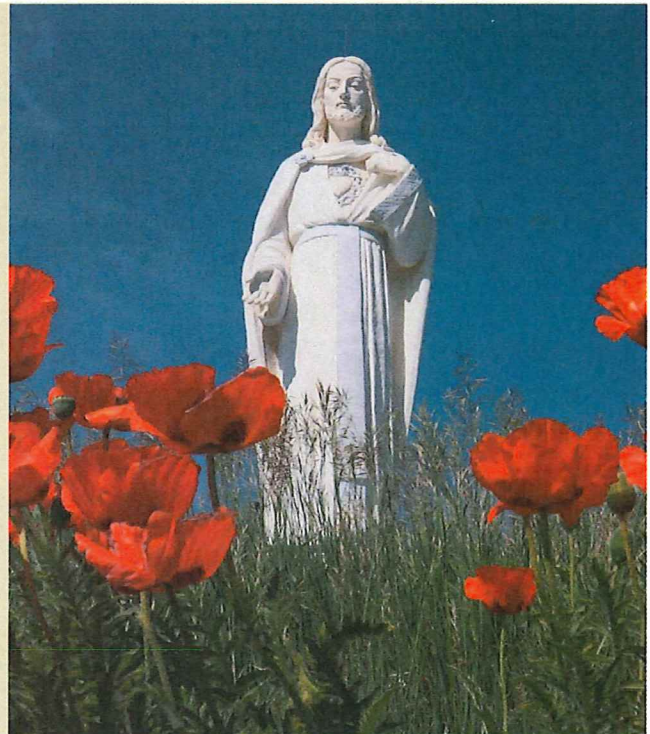
---

Our goal for the  
Heart of Jesus  
Capital Campaign is  
\$4,500,000.

Mother Cabrini Shrine is  
self-supporting. We are  
not subsidized by the  
Archdiocese of Denver  
or the Missionary  
Sisters of the Sacred  
Heart of Jesus.

---

---







*Timeline and Significant Dates in the Life of  
St. Frances Xavier Cabrini  
and her Work & Ministry in Colorado*

- 1850** • Born in Sant'Angelo Lodigiano, Italy
- 1857** • Confirmation
- 1859** • First Holy Communion – Easter Sunday
- 1880** • Founding of the Institute of the Missionary Sisters of the Sacred Heart of Jesus in Codogno, Italy
- 1889** • Arrives in the United States
- 1902** • Mother Cabrini arrives in Denver and opens the first of several schools throughout the United States. She later opens the Queen of Heaven Orphanage in north Denver for girls ages two to fifteen
- 1909** • *August:* Mother Cabrini purchases the first tract of land near Lookout Mountain in Golden  
• *October:* Mother Cabrini becomes a naturalized citizen of the United States of America in Seattle, WA
- 1912** • Mother Cabrini's last visit to Colorado—she discovered the spring of water on the Golden property and also gave the directive for the Stone House to be built
- 1917** • Mother Cabrini's death in Chicago
- 1938** • Beatification of Mother Cabrini by Pope Pius XI
- 1946** • Canonization of Mother Cabrini by Pope Pius XII
- 1950** • Proclamation of Mother Cabrini as universal Patroness of Immigrants

Dear Friends,

Mother Cabrini dreamed of having a place in the foothills of Denver (Golden) Colorado to serve as a summer camp for the girls from Queen of Heaven Orphanage in the early 1900's. This same summer camp is now Mother Cabrini Shrine. It was Mother Cabrini's faith that struck the rock which started the spring of water for the children and the Sisters. That life-giving and healing water still flows today.

The Shrine seeks to be a place of quiet prayer, genuine hospitality, and peaceful pilgrimage. In the nearly 70 years of existence the chapel and convent facilities need updating and renewal, along with increased lavatories, an elevator, and an expanded gift shop and café.

For this reason, I am excited and honored to be a part of this major endeavor. I invite you to join me in bringing to reality a renewed and more peaceful environment to seek the Lord's presence and the intercession of Mother Cabrini for our spiritual needs.

"I CAN DO ALL THINGS IN CHRIST WHO STRENGTHENS ME." Phil.3:14

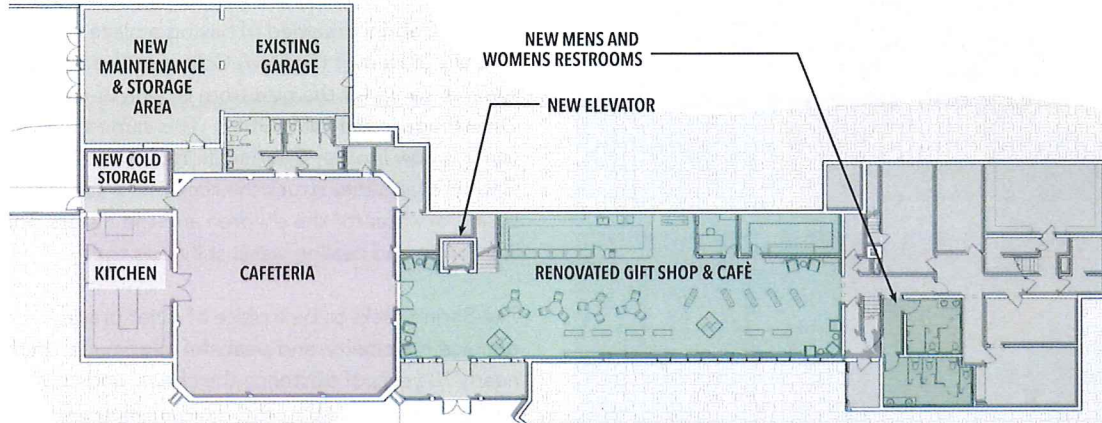
Prayerfully,  
Fr. John Lager, O.F.M., Cap.  
Campaign Chair



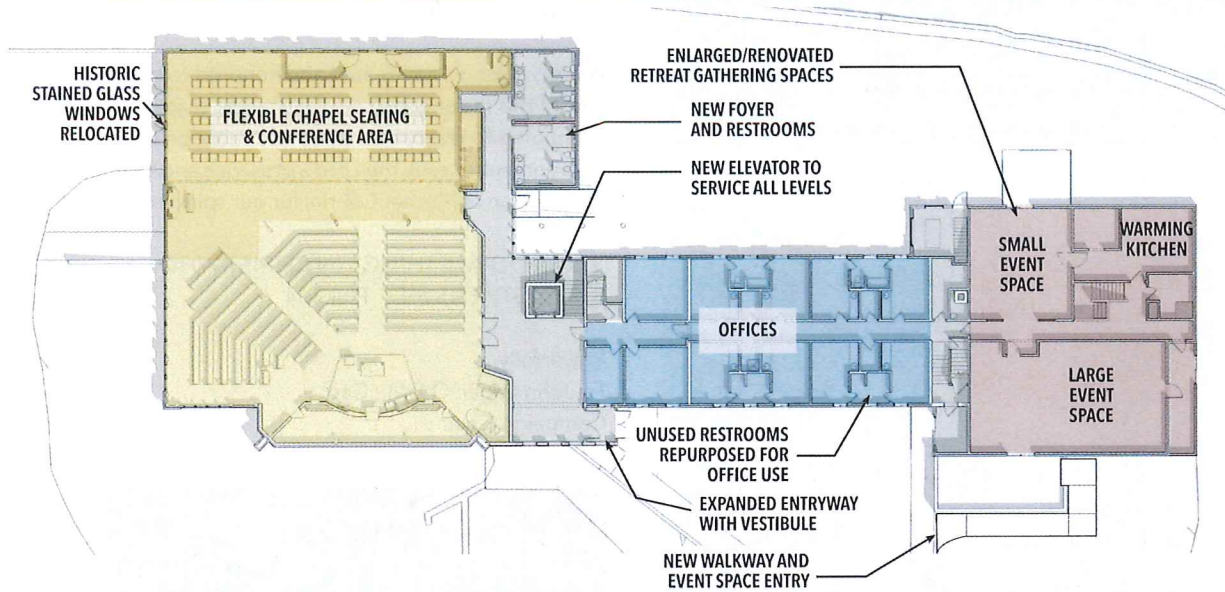




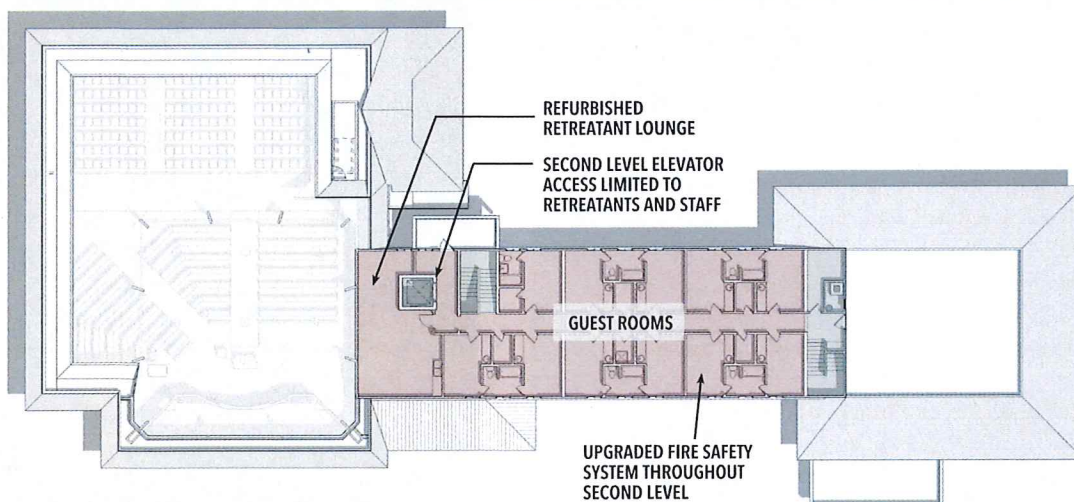
## PROJECT OVERVIEW



FIRST FLOOR



SECOND FLOOR



THIRD FLOOR



**\$4.5 MILLION CAPITAL  
CAMPAIGN WILL FUND THE  
PLANNED RECONFIGURATION  
AND EXPANSION:**

Expand the NE building corner exterior walls adding space to the chapel and lower level.

New space in the rear of the chapel with movable walls to accommodate additional chapel seating from 250 to 400 or more. The space also includes conference/meeting rooms and a bridal dressing area.

Remodel the interior of the chapel to include the stained glass within the chapel.

Addition of a new elevator for visitor use.

Additional kitchen storage and walk-in coolers closer to current kitchen for efficiencies.

Expansion of Gift Shop:

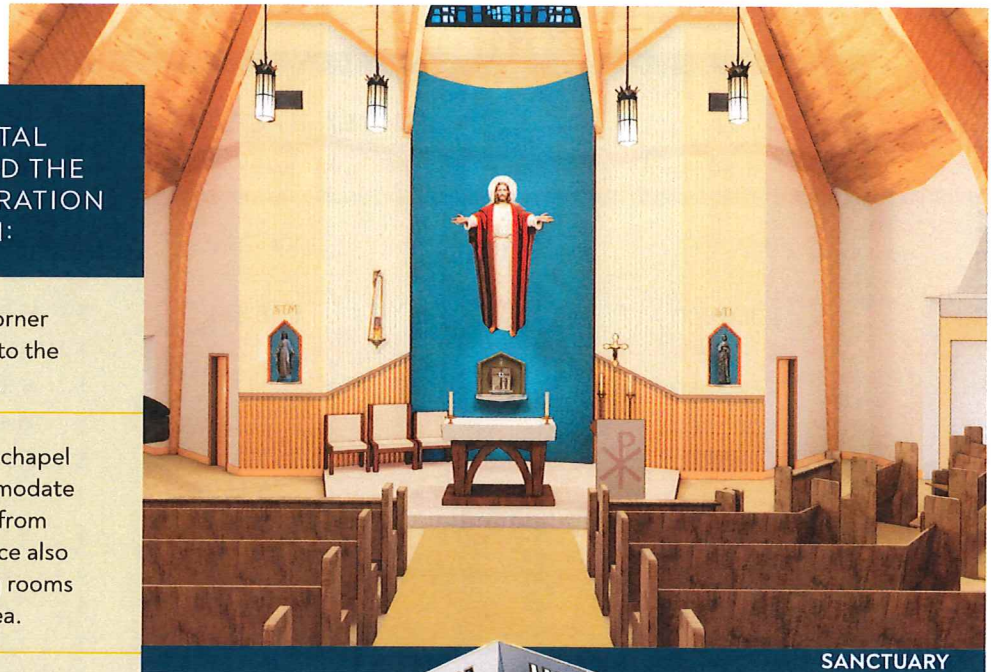
- Café style seating for coffee and snacks.
- Additional space for merchandise display area.

New parking lot with 95 spaces east of the main building.

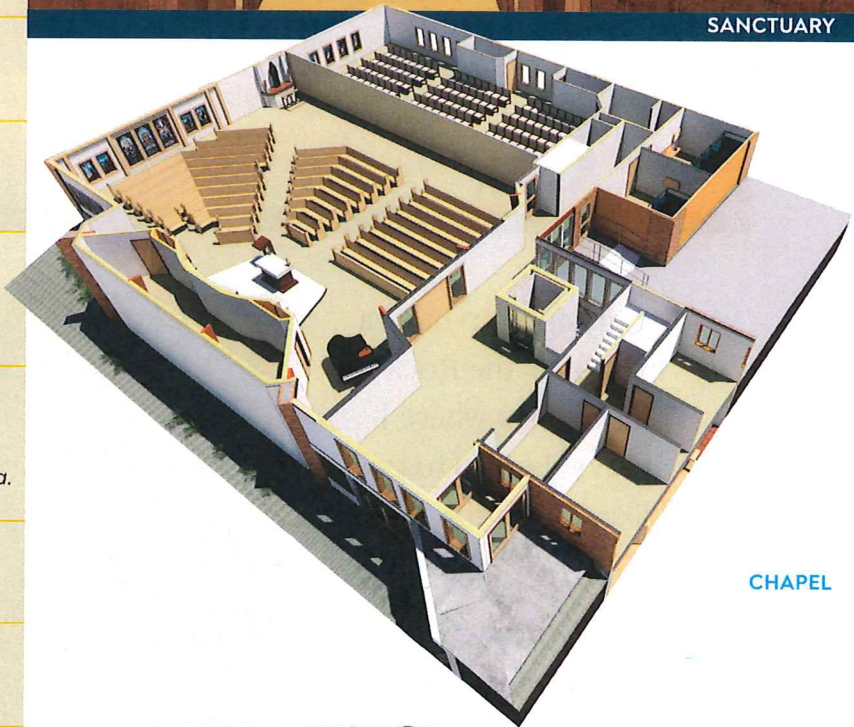
Renovation and enhancement of retreat meeting space.

Additional bathrooms with 8 additional stalls near the Gift Shop and 6 additional stalls near the Chapel.

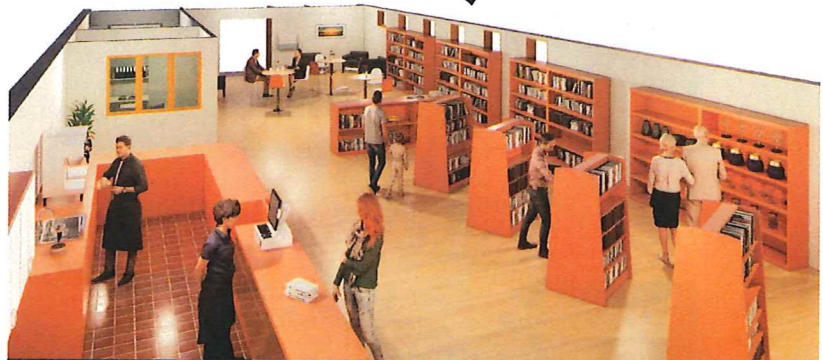
**These physical changes will position  
the Shrine to maximize the  
effectiveness of visitor's experiences  
for decades to come.**



**SANCTUARY**



**CHAPEL**



**GIFT SHOP/CAFÉ**





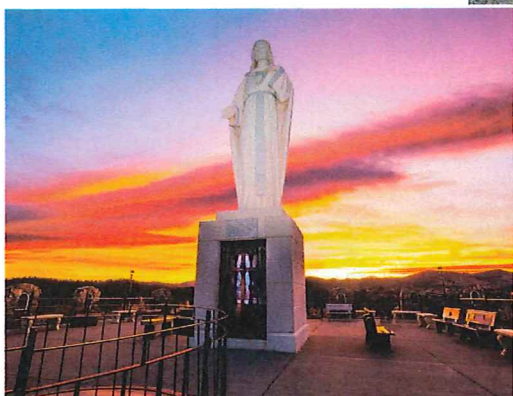
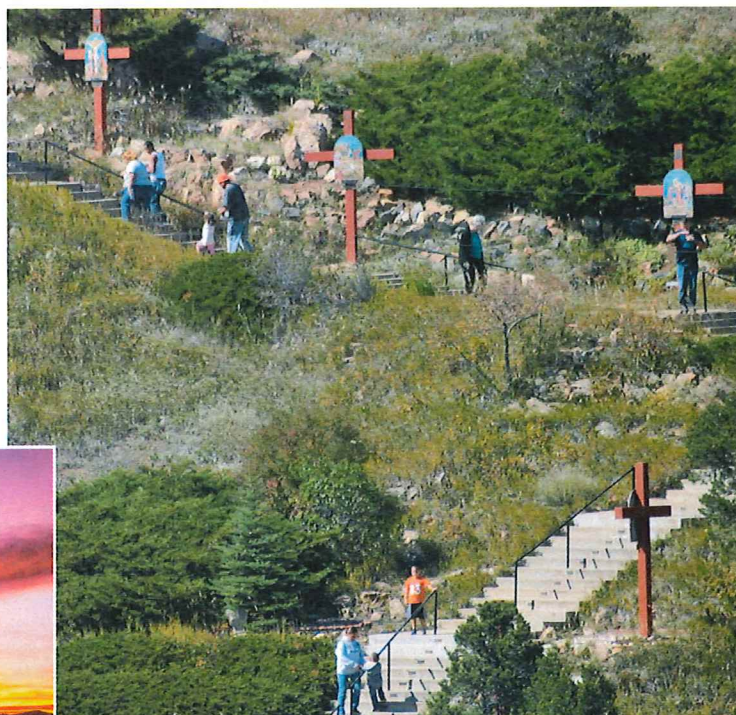
### THREE-YEAR PLEDGE CHART

#### GIFT EXAMPLES

TOTAL GIFT	MONTHLY	QUARTERLY	SEMI-ANNUALLY	ANNUALLY
\$ 100,000	\$ 2,778	\$ 8,334	\$ 16,667	\$ 33,334
\$ 75,000	\$ 2,084	\$ 6,250	\$ 12,500	\$ 25,000
\$ 50,000	\$ 1,388	\$ 4,167	\$ 8,334	\$ 16,667
\$ 40,000	\$ 1,111	\$ 3,334	\$ 6,667	\$ 13,334
\$ 30,000	\$ 834	\$ 2,500	\$ 5,000	\$ 10,000
\$ 25,000	\$ 694	\$ 2,084	\$ 4,167	\$ 8,333
\$ 20,000	\$ 556	\$ 1,667	\$ 3,334	\$ 6,667
\$ 15,000	\$ 417	\$ 1,250	\$ 2,500	\$ 5,000
\$ 10,000	\$ 278	\$ 834	\$ 1,667	\$ 3,334
\$ 8,000	\$ 222	\$ 667	\$ 1,334	\$ 2,667
\$ 5,000	\$ 139	\$ 417	\$ 834	\$ 1,667
\$ 2,000	\$ 56	\$ 167	\$ 334	\$ 667
\$ 1,000	\$ 27	\$ 84	\$ 167	\$ 334
\$ 500	\$ 14	\$ 42	\$ 84	\$ 167

"I am happy to have a mission in the Rocky Mountains where I always desired to go. I like Colorado! May God be praised!"

—St. Frances  
Xavier Cabrini







## HOW CAN I MAKE A GIFT TO THE CAPITAL CAMPAIGN?

There are numerous ways in which you can make your gift.  
As you consider your commitment, please consider the following options:

### ♥ CASH, CHECK, OR ELECTRONIC PAYMENT

Most donors will make gifts and pay their pledge by cash or check. To make the process even easier, recurring donations (electronic fund transfer) is available. Payments may be mailed or dropped in the collection basket during mass.

### ♥ APPRECIATED ASSETS AND RETIREMENT ACCOUNTS

Funding charitable gifts with appreciated stocks, bonds, or retirement account distributions can be advantageous to you and the Shrine. In most cases, you will avoid paying any capital gains taxes while receiving a charitable deduction, and the Shrine will receive a liquid asset. To claim these benefits, the asset must be transferred to the Shrine rather than selling the assets and donating the proceeds. Your legal and financial advisors can inform you about the most advantageous way to make the transfer.

### ♥ GIFTS FROM THE CASH VALUE OF LIFE INSURANCE

Some people have accumulated cash in insurance policies that they can give to fulfill their commitment to the capital campaign.

### ♥ PERSONAL PROPERTY AND COMMODITIES

Personal property such as farm commodities, automobiles, artwork, jewelry, valuable collectibles, antiques, and more can be donated to give you a charitable tax deduction for the full fair market value. The donor may be required to obtain a qualified appraisal to establish the gift value, depending on the type and value of the asset.

### ♥ APPRECIATED REAL ESTATE

Giving real estate that has been held for over one year and appreciated in value enjoys tax benefits. These benefits may include the full market deduction and no capital gains tax. If property has been depreciated on an accelerated basis, the deduction for the contribution may be subject to different rules.

For further information or questions regarding how to make these gifts or the tax benefits, please contact your financial and/or legal advisor.

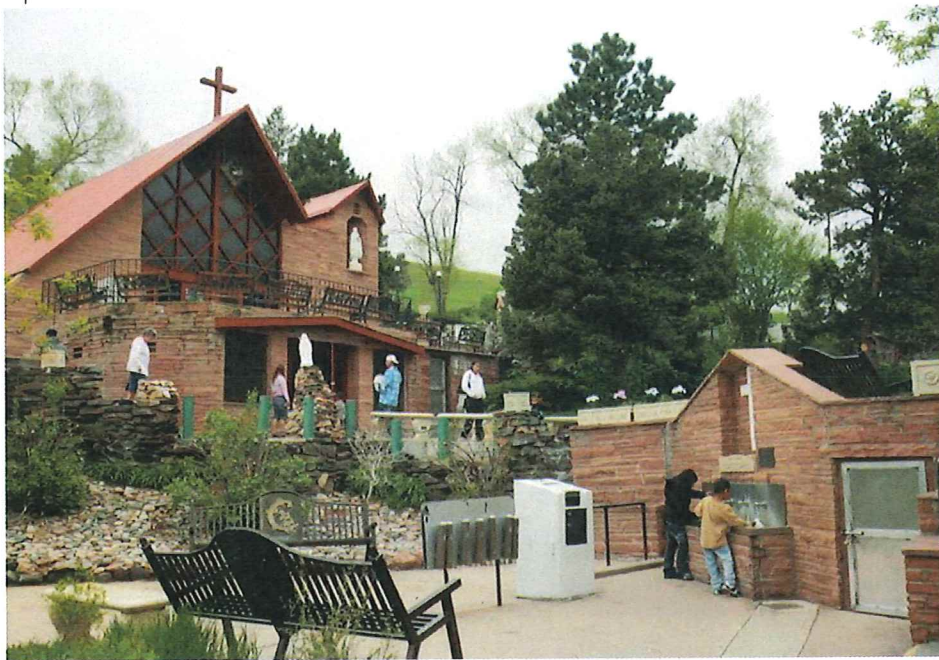


“With you, we Missionary Sisters of the Sacred Heart of Jesus, will continue sharing the gospel message, human warmth and the light and truth of love so that Christ will be the Heart of the World.”

—St. Frances Xavier Cabrini







## MOTHER CABRINI SHRINE

20189 CABRINI BLVD.

GOLDEN, CO 80401

303.526.0758

WWW.MOTHERCABRINISHRINE.ORG

### THE HEART OF JESUS CAMPAIGN PRAYER FOR MOTHER CABRINI SHRINE

Almighty and Eternal Father, Giver of all gifts, show us your mercy and grant we beseech you, through the merits of your faithful servant St. Frances Xavier Cabrini that all who invoke her intercession at Mother Cabrini Shrine may obtain what they desire according to your Most Holy Will.

O Lord, we come before you today seeking your bountiful gifts from the faithful who have supported Mother Cabrini Shrine over these decades. Please continue to enhance this Holy Ground where Mother Cabrini herself walked, and where she struck the rock from which springs of living water still flow.

Bless the Heart of Jesus Campaign as we seek to renew and refresh the legacy she has entrusted to us here at Mother Cabrini Shrine. St. Frances Xavier Cabrini, beloved spouse of the Sacred Heart of Jesus, intercede for us now that the favor we ask for may be granted. Amen.

### MOTHER CABRINI SHRINE HEART OF JESUS CAPITAL CAMPAIGN COMMITTEE

Fr. John Lager, O.F.M., Cap. – Chair

Justin Dickson

Mike Disberger

Fr. Bob Fisher

Ron and Kathy Galiffa

Carol Harwood

John and Margaret Kelly

Mari Ann Martin

M.L. Richardson

Lloyd Swint

Laurie Vieira

Luz Maria Villa

### MOTHER CABRINI SHRINE STAFF

Jeff Lewis, Executive Director

Sr. Roselle Santivasi, M.S.C.

JoAnn Seaman, Development Director

Betty Johnson, CFRE, Consultant

Cover Photo: Patrick Dillon Photography